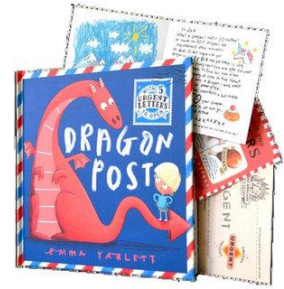




Years 1 and 2

Spring 2, 2020

WOULD A DRAGON MAKE A GOOD PET?



English

Main texts and stimulus:
Dragon Post Book and Edgar the dragon

Tell me a Dragon

Instruction writing

Non-chronological report – Fact File

Explanation texts

Letter writing

Mathematics

Shapes

Position and Direction

Measure

Using and applying operations

Learning Theme

The legend of the dragon within various cultures

History of castles

Learning for Life

Team building

Caring for others

Science

Animals including humans

Working scientifically

Key Vocabulary

Dragon, discover, lair, care, mysterious, mythical, legend, enchanted, train, castle, moat, turret, draw bridge, tower, damsel

Computing

Grouping and sorting

Maze Explorers

Physical Development

Gymnastics

Games

Expressive Arts and Design

Design a case to protect a dragon egg

Clay dragons

Music – Round and Round

RE

Is the world a fair place?

Pre Learning Activities (optional):

Nature Walks

What animals can you spot?

Where is their habitat?

Watch 'How to Train a Dragon' or 'Pete's Dragon'

Questions

How to look after a pet?

What do animals need?

Visit a Zoo or Wildlife Centre

Create

Can you mould a dragon, knight or princess from one piece of foil?

Explore different material and their uses – what can you create?

Websites

BBC learning clips

Google Maps – Look at castles from a dragon's point of view

Phonics Play – Phase 2 to 5

Topmarks

Hit the Button

Explorify

Other texts that you could read home:

There's no Dragon in this Story

Dragon Stew

The Dragon Machine

No such thing as a dragon

The Adventures of Egg Box Dragon

Too Hot to Hug

Key Dates

Monday 24th February – INSET Day

Wednesday 4th March – Butterfly Parent Lunch

9.00am Friday 6th March - Butterflies Class Assembly

9.00 Friday 13th March – Dragonfly Class Assembly

Monday 16th March – Painshill Trip

Tuesday 17th March Parents Evening

Thursday 19th March - Mothers/Grandmothers Activity Abinger 1:30pm to 2:45pm

Thursday 19th March Parents' Evening at both sites

Thursday 19th March – Mother and Grandmothers Afternoon

Thursday 2nd April – End of Term

Friday 3rd April – INSET Day

Reading – Children should read every day. Reading should be recorded in the reading record (this can be a comment or simply a signature to indicate that home reading has taken place). Books and reading records should be brought to school daily. The question sheet at the front of your child's reading record is a useful reference for how to support your child.

Homework – Homework is set on a Friday, return on the following Wednesday.

Spellings – A list of common exception words are sent home each half term. Please keep revising the words that have been previously learnt.

Telling the time – Is your child telling the time throughout the day? Can you help your child with the concept of time e.g. dinner has five minutes left in the oven or we will be leaving home in a minute.

Times tables (Year 2) –Keep logging into Timestable Rockstars to challenge yourself!

P.E. KITS: Please ensure your child has a full P.E. kit in school every day (clearly named) and ready for rain or shine.

Wellington boots - To be left at school for wet playtimes and learning activities.

Punctuality - The official start time of school is 8.45am. Please ensure your child arrives promptly, as learning activities are available from 08:30am. This has a huge impact on learning!